

STS573 565GSM IFR Theatre Wool



DESCRIPTION

565 GSM IFR wool is a 90% wool/10% nylon blend made from 100% recyclable materials which has both AS1530 parts 2 & 3 testing certificate. The wool is produced using recycled water with a zero liquid discharge manufacturing procedure.

STS573 wool is a good acoustic sound damping with a range of fullness to achieve different values. The curtain provides a good way to enhance the look of the venue and add acoustic damping at a low SQM cost with a quick installation. Cinemas use curtains on side and rear wall.

Live theatre and schools use curtains to dress the stage end (FOHC (Front of House Curtain), border, legs, tabs and valances).

FEATURES

- AS1530 Parts 2 and 3
- 420 GSM IFR 1.80W Roll size 30-SOLM
- IFR (Inherent Fire Retardant)
- 90% wool and 10% nylon
- Care Label 4



“Specialty Theatre have designed and manufactured quality theatre equipment since 1969. Our products are installed in 38 countries around the world”

NOTE: Specifications are subject to change without notice. While all due care and attention has been taken in the preparation of this document, Specialty Theatre Pty Ltd shall not be liable for any inaccuracies or omissions which may occur therein. Manufactured by Specialty Theatre Pty Ltd. ACN 661 878 271.

specialtytheatre.com.au

SPECIALTY THEATRE PTY LTD ACN 661 878 271

40 Tennyson Street, Williamstown, VIC 3016 AUSTRALIA | phone +61 3 9028 0310 | email theatre@specialtytheatre.com.au

STS573 565GSM IFR Theatre Wool



STS573 Technical Specifications

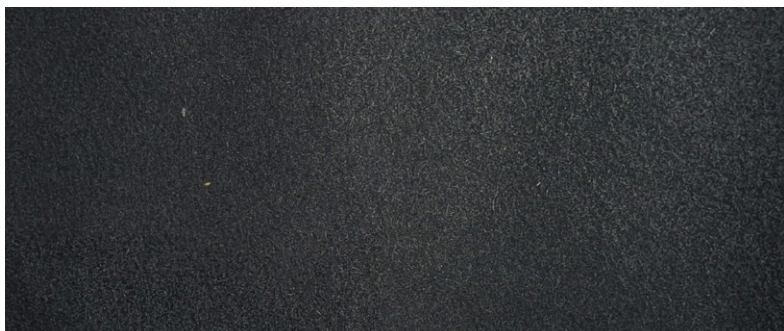
OVERALL SPECIFICATIONS

- 565 GSM IFR 1.80W Roll size 30-SOLM
- IFR (Inherent Fire Retardant)
- 90% wool and 10% nylon
- Care Label 4
- Multi colours available in stock and custom colours over 300Lm

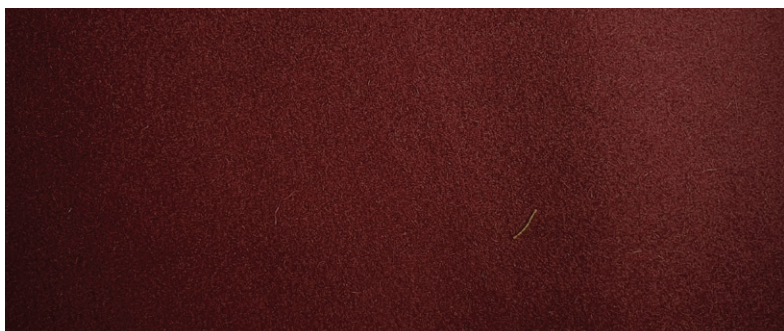
ARCHITECTS/ ENGINEERS SPECIFICATIONS

- Good acoustic quality and quick installation
 - AS1530 Parts 2 and 3
 - Care Label 4
- Woolen fabrics must be protected against sunlight with lining and/or other shading device. Remove hooks, rings and trims before cleaning. Regularly vacuum with appropriate attachment. Do not wash. Dry clean only ©. Reduce load and tumble dry at 55°C. Cool iron may be used. Possible shrinkage 3%.
- 100% recycled fabric used in making IFR with a zero liquid discharge manufacture procedure
 - 90% wool and 10 Nylon
 - 565 GSM weight
 - Regulatory indices
 - Ignitability indices 0
 - Spread of flame 0
 - Heat Evolved index 0
 - Smoke development 4
 - Flammability index 2

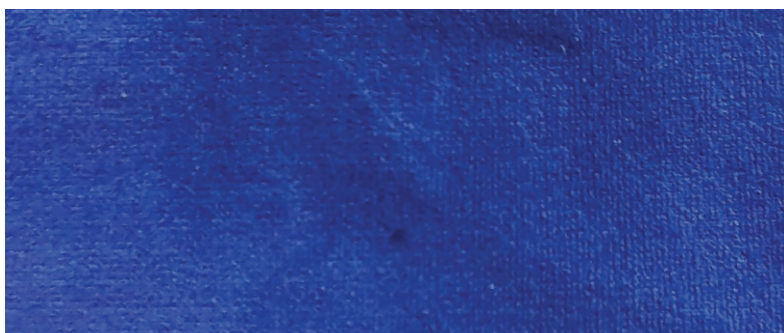
COLOUR RANGE



BLACK



BURGUNDY



NAVY

FOR FURTHER INFORMATION PLEASE CONTACT SPECIALTY THEATRE OR YOUR NEAREST SPECIALTY THEATRE DEALER:

specialtytheatre.com.au

SPECIALTY THEATRE PTY LTD ACN 661 878 271

40 Tennyson Street, Williamstown, VIC 3016 AUSTRALIA | phone +61 3 9028 0310 | email theatre@specialtytheatre.com.au

STS573 565GSM IFR Theatre Wool

