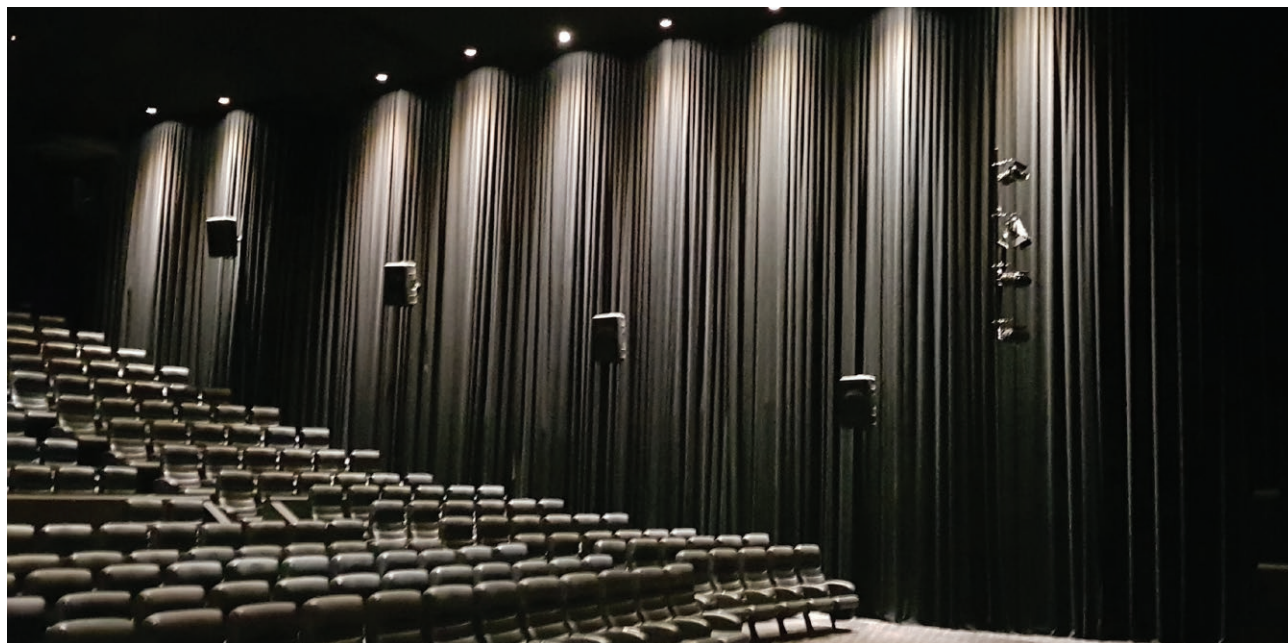


# STS571 420GSM IFR Theatre Wool



## DESCRIPTION

420 GSM IFR wool is a 90% wool/10% nylon blend made from 100% recyclable materials which has both AS1530 parts 2 & 3 - VOC Emissions testing certificate. The wool is produced using recycled water with a zero liquid discharge manufacturing procedure.

STS571 wool is a good acoustic sound damping with a range of fullness to achieve different values. The curtain provides a good way to enhance the look of the venue and add acoustic damping at a low SQM cost with a quick installation. Cinemas use curtains on side and rear wall.

Live theatre and schools use curtains to dress the stage end (FOHC (Front of House Curtain), border, legs, tabs and valances).

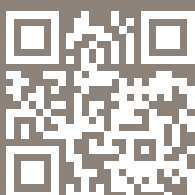
## FEATURES

- AS1530 Parts 2 and 3
- 420 GSM IFR 1.80W Roll size 30-SOLM
- IFR (Inherent Fire Retardant)
- 90% wool and 10% nylon
- VOC Emissions testing
- Care Label 4



*“Specialty Theatre have designed and manufactured quality theatre equipment since 1969. Our products are installed in 38 countries around the world”*

NOTE: Specifications are subject to change without notice. While all due care and attention has been taken in the preparation of this document, Specialty Theatre Pty Ltd shall not be liable for any inaccuracies or omissions which may occur therein. Manufactured by Specialty Theatre Pty Ltd. ACN 661 878 271.



# STS571 Technical Specifications

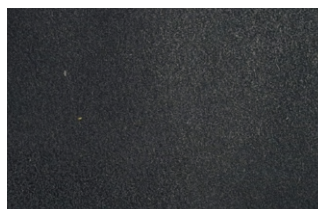
## OVERALL SPECIFICATIONS

- 420 GSM IFR 1.80W Roll size 30-SOLM
- IFR (Inherent Fire Retardant)
- 90% wool and 10% nylon
- VOC Emissions testing
- Care Label 4
- Multi colours available in stock and custom colours over 300Lm

## ARCHITECTS/ ENGINEERS SPECIFICATIONS

- Good acoustic quality and quick installation
  - AS1530 Parts 2 and 3
  - Care Label 4
- Woolen fabrics must be protected against sunlight with lining and/or other shading device. Remove hooks, rings and trims before cleaning. Regularly vacuum with appropriate attachment. Do not wash. Dry clean only ☉. Reduce load and tumble dry at 55°C. Cool iron may be used. Possible shrinkage 3%.
- VOC - Emissions testing
  - 100% recycled fabric used in making IFR with a zero liquid discharge manufacture procedure
  - 90% wool and 10 Nylon
  - 420 GSM weight
  - Regulatory indices
  - Ignitability indices 0
  - Spread of flame 0
  - Heat Evolved index 0
  - Smoke development 4
  - Group Number Assessment 2
  - Flammability index 1

## COLOUR RANGE



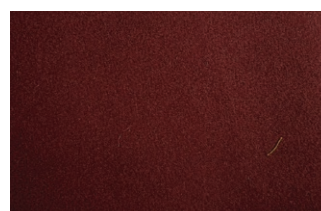
BLACK



TOMATO



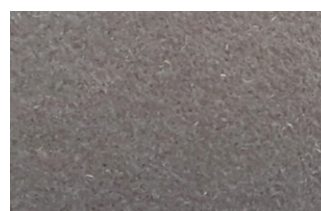
ROYAL BLUE



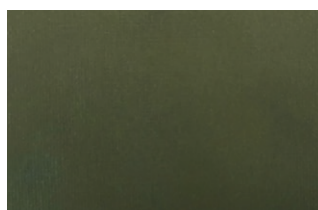
BURGUNDY



DARK BROWN



CHARCOAL



DARK GREEN



GOLD



NAVY

FOR FURTHER INFORMATION PLEASE CONTACT SPECIALTY THEATRE OR YOUR NEAREST SPECIALTY THEATRE DEALER:

[specialtytheatre.com.au](http://specialtytheatre.com.au)

SPECIALTY THEATRE PTY LTD ACN 661 878 271

40 Tennyson Street, Williamstown, VIC 3016 AUSTRALIA | phone +61 3 9028 0310 | email [theatre@specialtytheatre.com.au](mailto:theatre@specialtytheatre.com.au)

STS571 420GSM IFR Theatre Wool

